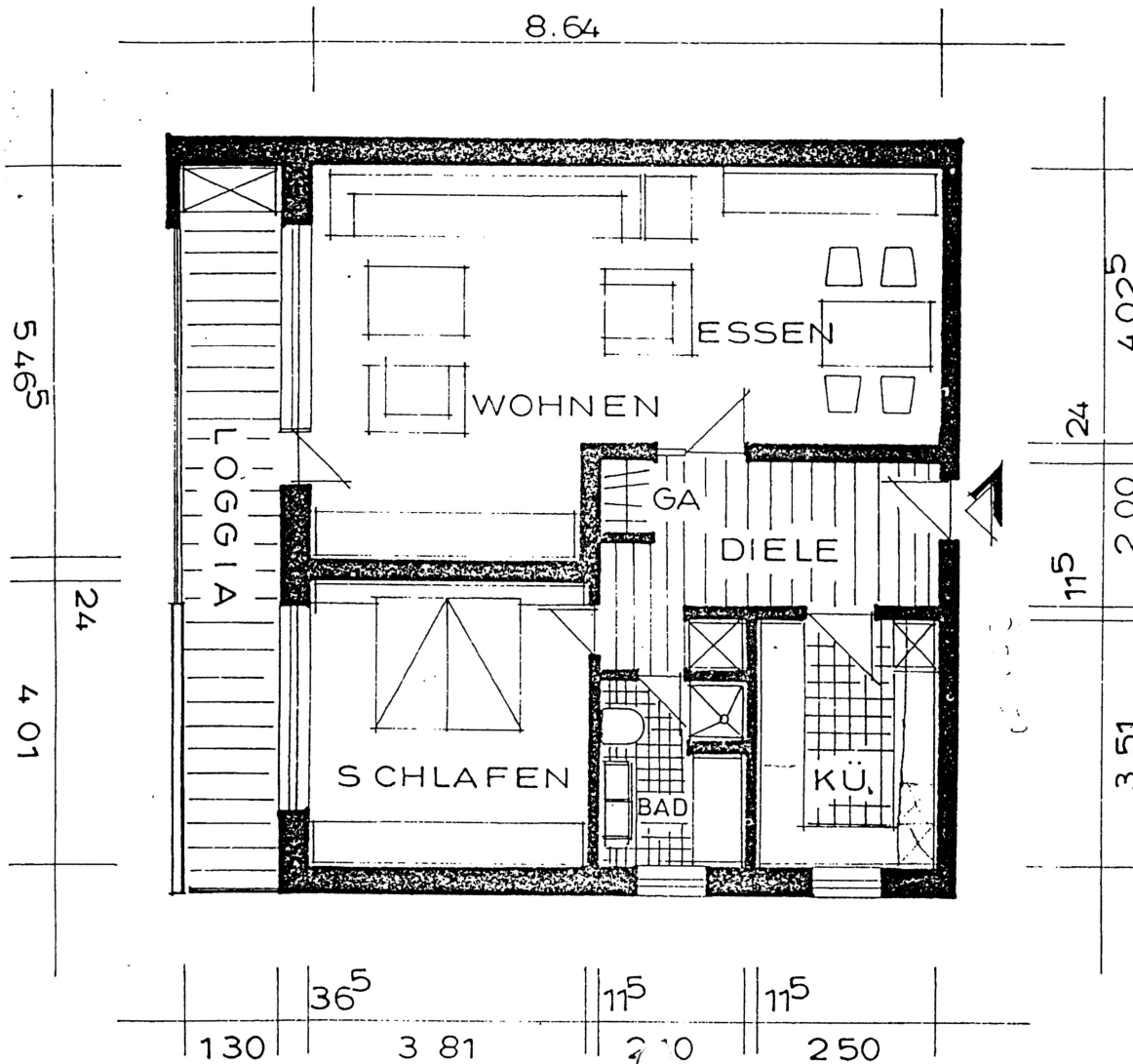


BRAHMS-/DÜRERSTRASSE

Typ Haus D - vorne



2-ZIMMER-WOHNUNG

WOHNEN	=	40,81 qm
SCHLAFEN	=	15,86 qm
KOCHEN	=	9,04 qm
BAD	=	5,46 qm
DIELE	=	11,38 qm
LOGGIA (0,25%)	=	4,00 qm
		<hr/>
		86,55 qm
-.3%	=	83,95 qm