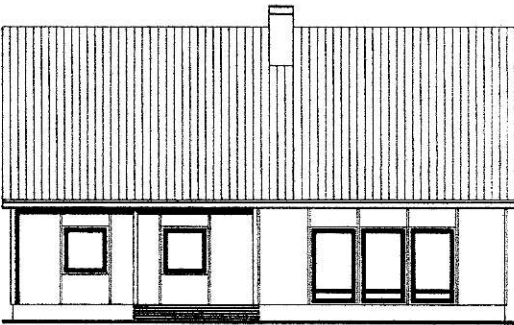
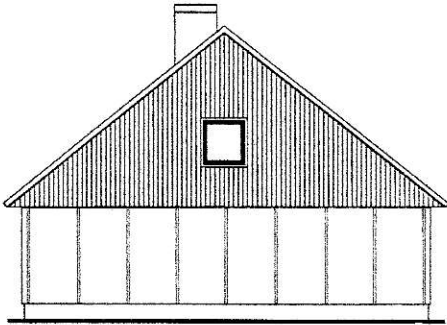
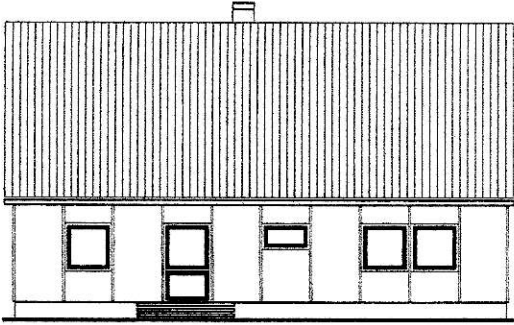


OKAL-Haus Typ 130



Bebaute Fläche 130,10 m²

Wohnfläche (nach DIN) 105,31 m²

1 Wohnzimmer 36,61 m² ←*)

1a EBecke 4,71 m²

3 Schlafzimmer 17,63 m²

4 Kinderzimmer 12,47 m² ←**)

6 Küche 8,36 m²

7 Bad 6,43 m²

7a Gäste-WC 2,20 m²

8 Flur | 10,35 m²

9 Diele

9a Windfang 2,27 m²

10 Terrasse 11,40 m²

(nach DIN 2,85 m²)

*) zu 1: Wohnzimmer $36,61 \text{ m}^2 \cdot 7,5 = 29,11 \text{ m}^2$

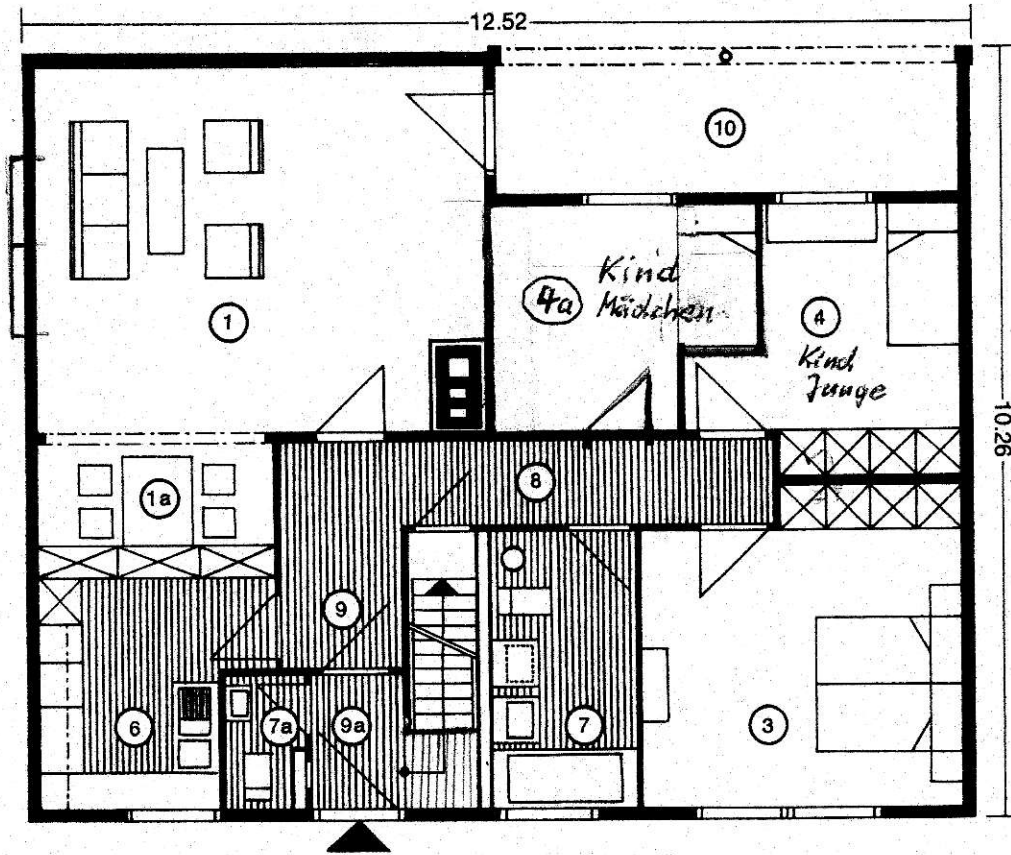
***) zu 4: Kinderzimmer

⊕ Kind Junge $12,47 \text{ m}^2 \cdot 2 = 10,47 \text{ m}^2$

⊕ Kind Mädchen $7,5 + 2 \text{ m}^2 = 9,50 \text{ m}^2$

mit Satteldach 28° Neigung

X 28° Sattel



Kellergeschoß

